

INTERMOT DUAL DISPLACEMENT MOTORS

IAC SERIES

H3 MODEL

IAC 500

IAC 500/B30

INDEX

IAC 500 H3 D40 - - - - -	Pag.	24
IAC 500/B30 H3 D40 - - - - -	"	25
IAC 500 H3 D47 C3 SV - - - - -	"	26
IAC 500/B30 H3 D47 C3 SV - - - - -	"	27
IAC 500 H3 D47 C3-24 SV - - - - -	"	28
IAC 500/B30 H3 D47 C3-24 SV - - - - -	"	29
ORDERING INSTRUCTIONS - - - - -	"	30

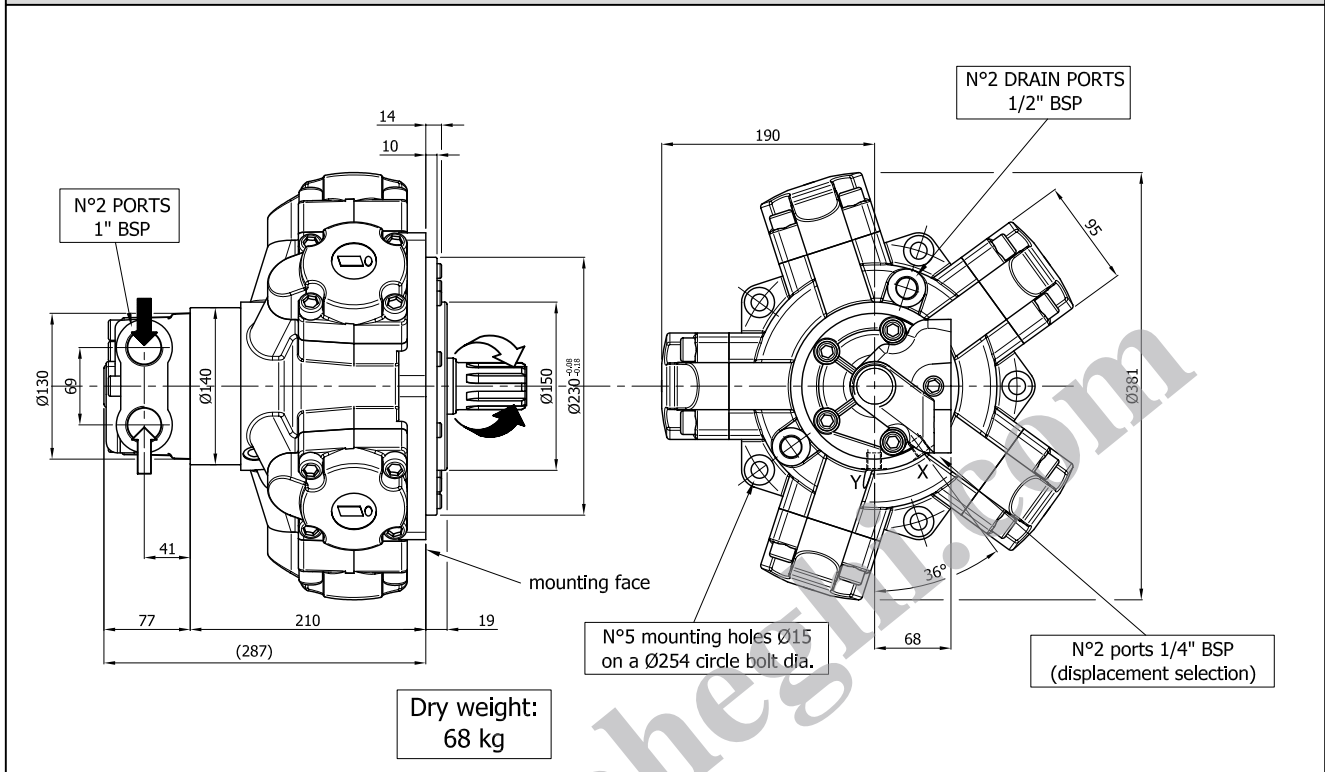
MOTOR TECHNICAL DATA

IAC 500 H3

	492	442	393	344	292	255	197	147	98
Displacement [cc/Rev]	7.8	7	6.3	5.5	4.7	4.1	3.1	2.3	1.6
Specific theoretical torque [Nm/bar]	450	505	520	545	580	595	600	600	600
Continuous maximum speed [rpm]	2	2	2	2	2	3	3	3	4
Minimum speed [rpm]	87.5	86	85	83.6	82.4	82	80	78	73.4
Mechanical efficiency [%]	82.5	81	80	77.2	74.3	69.6	62.1	52	30
Starting mechanical efficiency [%]	61	60	57	50	44	36	26	20	9
Continuous maximum power [kW]	66	75	71	62.5	55	45	21	25	11
Intermittent maximum power [kW]	250	250	250	250	250	250	250	250	250
Continuous maximum pressure [bar]	275	275	275	275	275	275	275	275	275
Intermittent maximum pressure [bar]	350	350	350	350	350	350	350	350	350
Peak pressure [bar]	10	10	10	10	10	10	10	10	10
Recommended flushing flow [l/min]									

SIZE

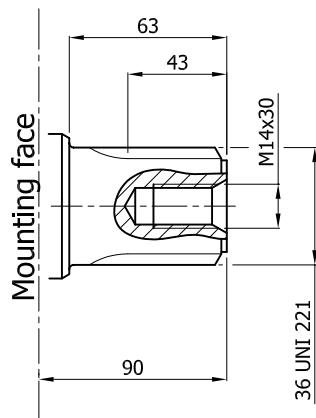
IAC 500 H3 D40



SHAFT

IAC 500 H3 D40

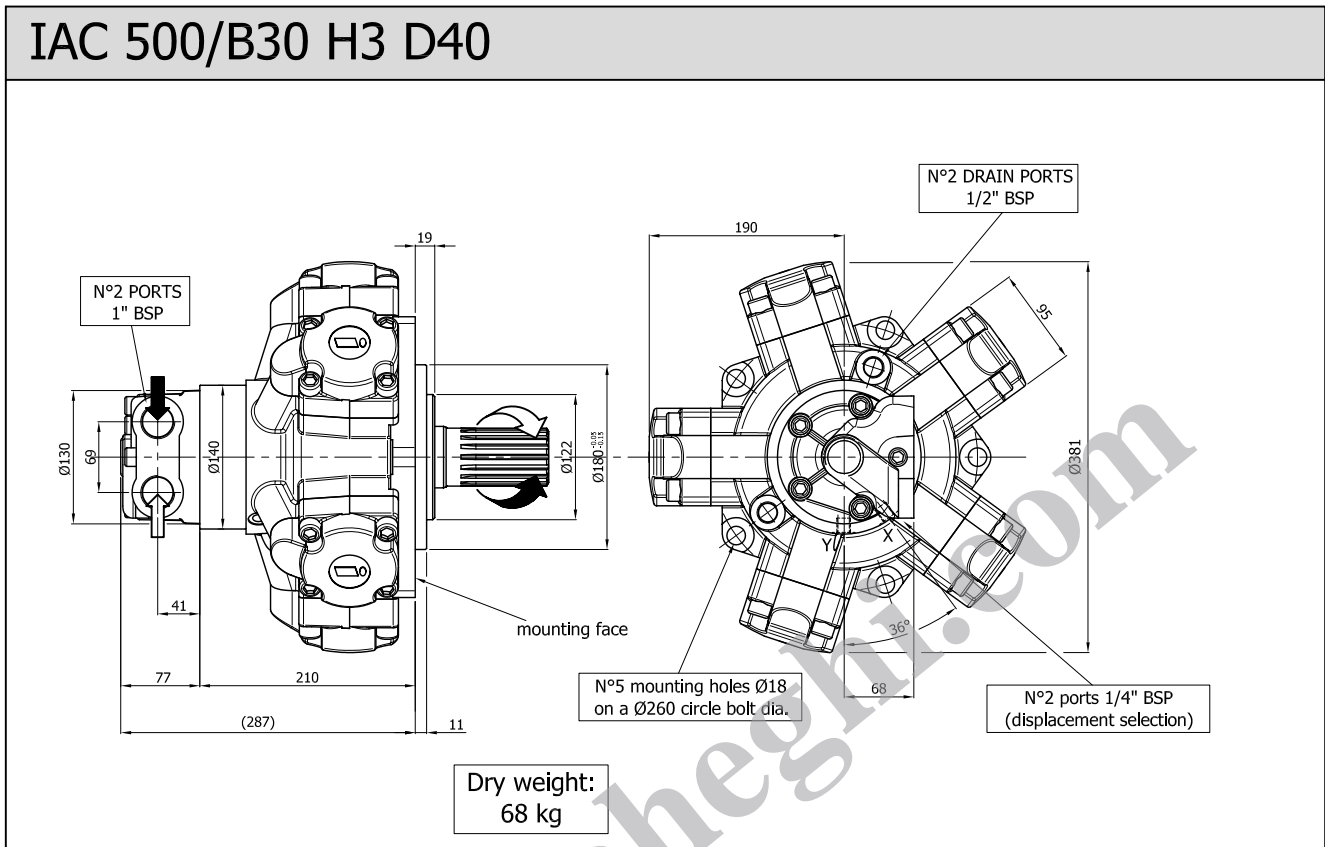
A0: Standard splined shaft



INTERCHANGEABLE WITH HMC30

SIZE

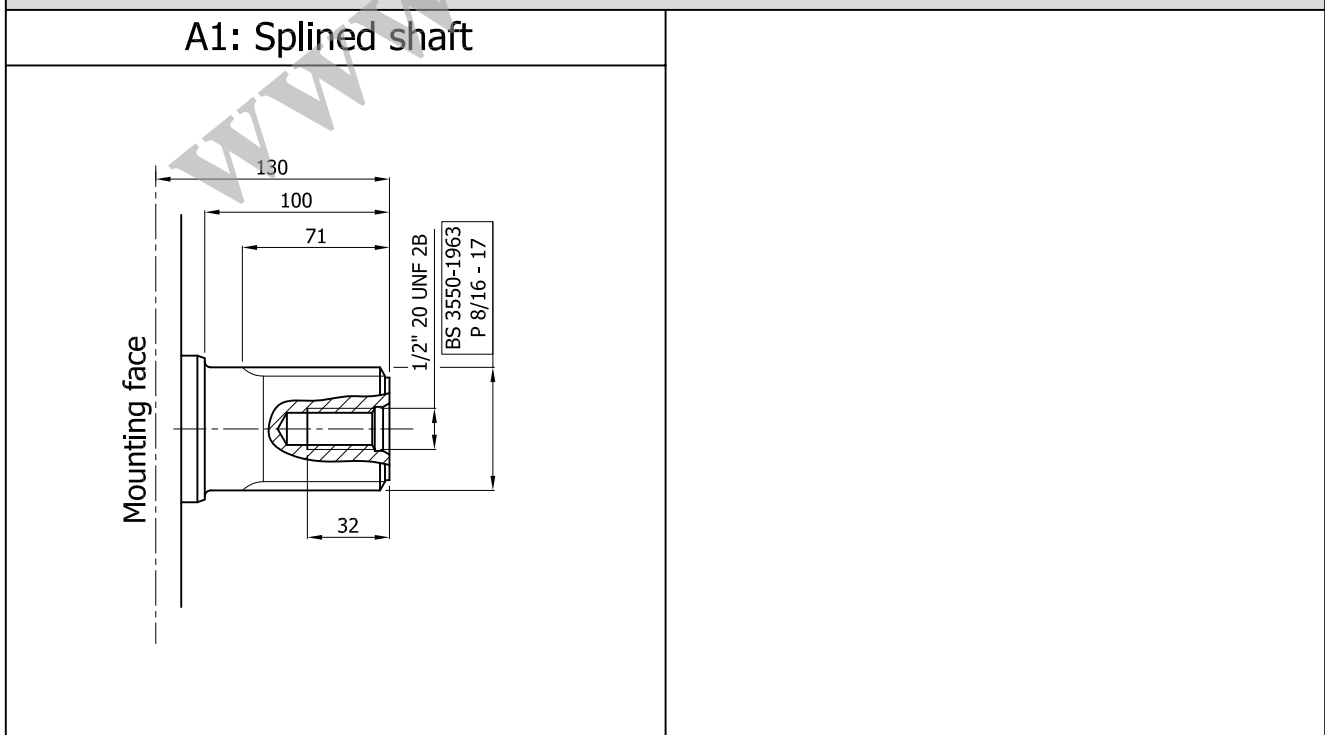
IAC 500/B30 H3 D40



SHAFT

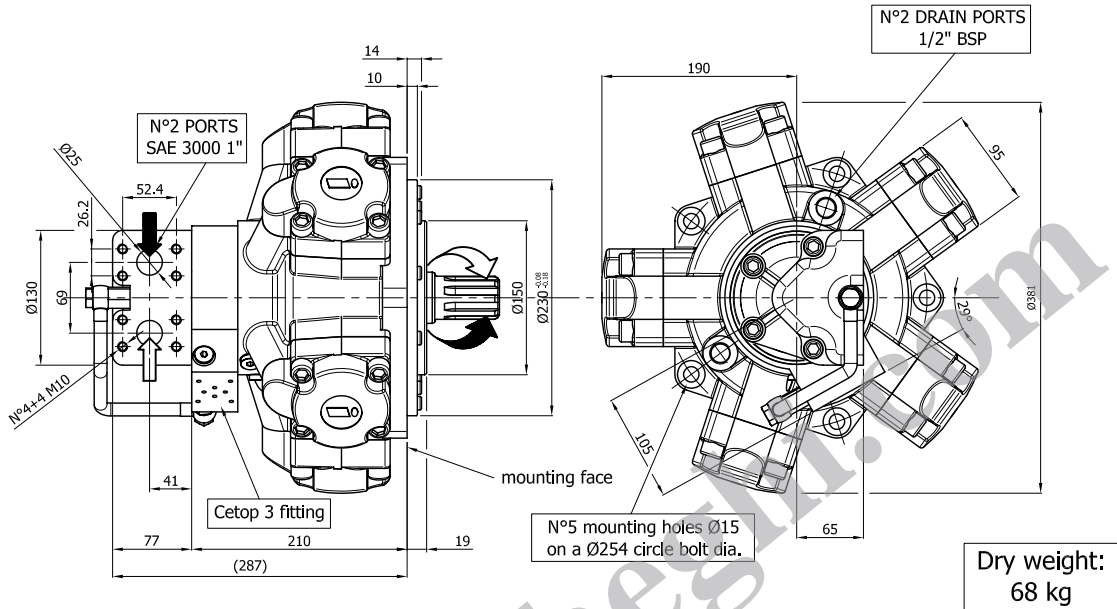
IAC 500/B30 H3 D40

A1: Splined shaft



SIZE

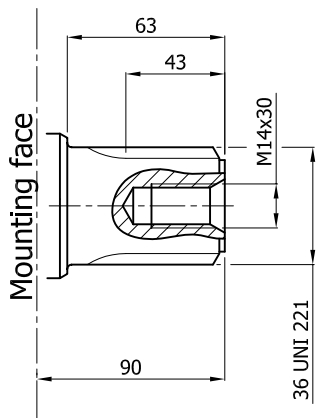
IAC 500 H3 D47 C3 SV



SHAFT

IAC 500 H3 D47 C3 SV

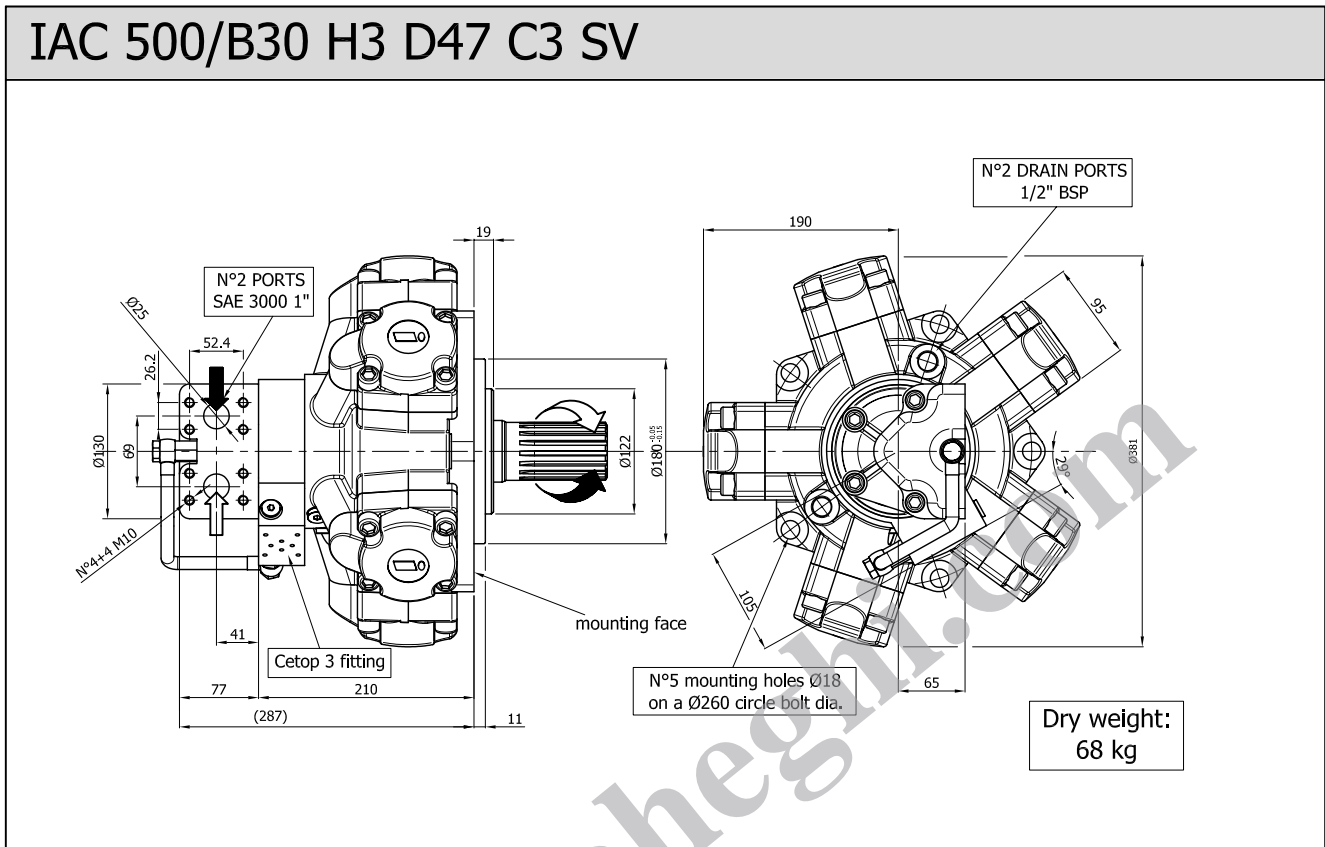
A0: Standard splined shaft



INTERCHANGEABLE WITH HMC30

SIZE

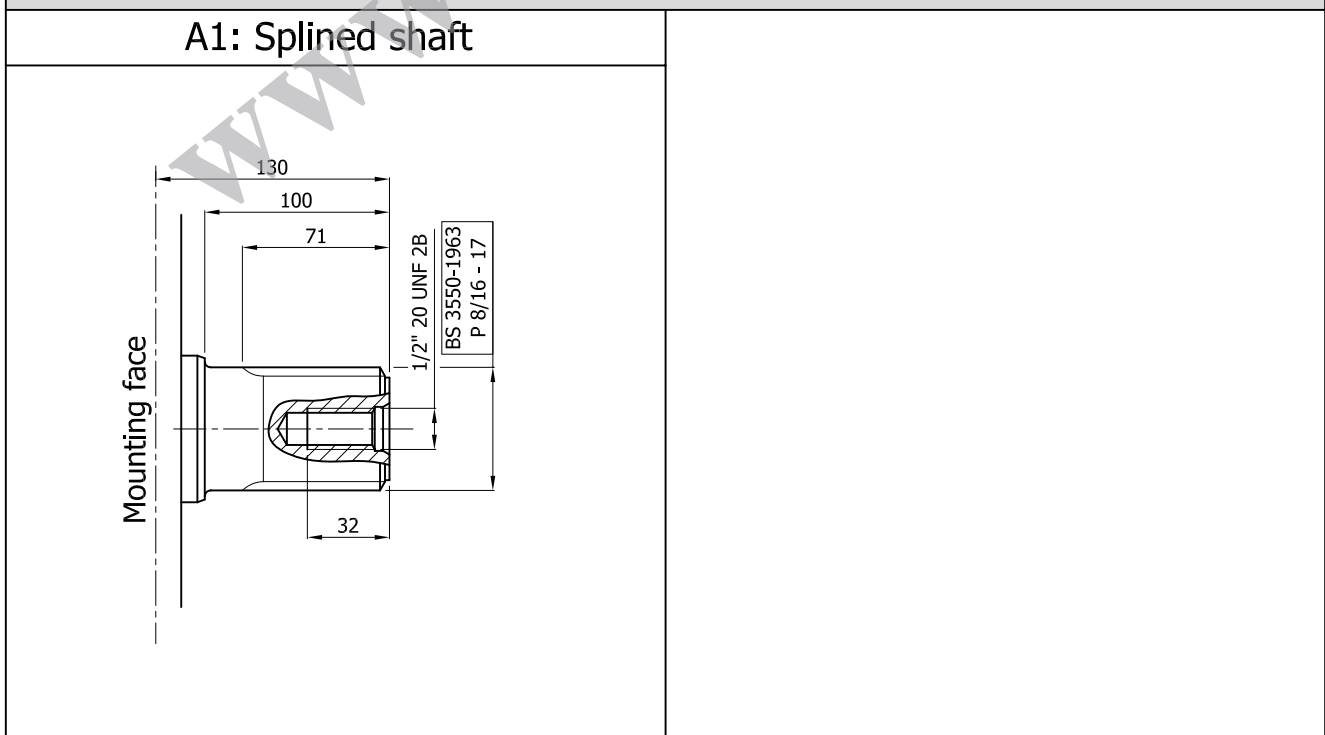
IAC 500/B30 H3 D47 C3 SV



SHAFT

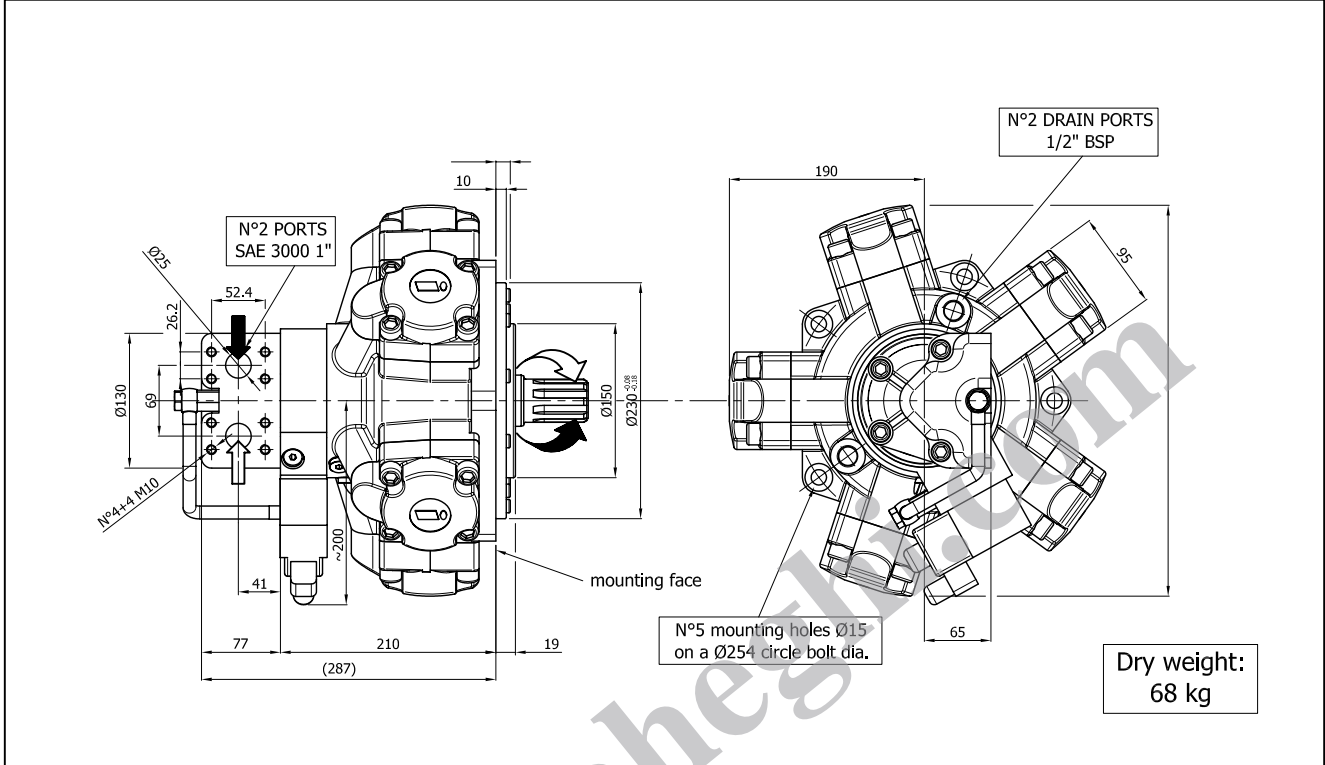
IAC 500/B30 H3 D47 C3 SV

A1: Splined shaft



SIZE

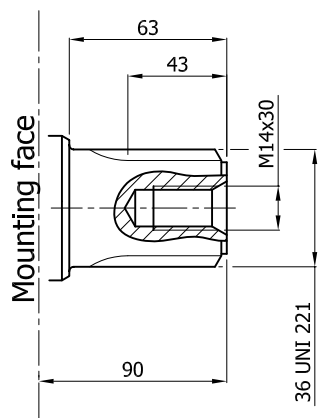
IAC 500 H3 D47 C3-24 SV



SHAFT

IAC 500 H3 D47 C3-24 SV

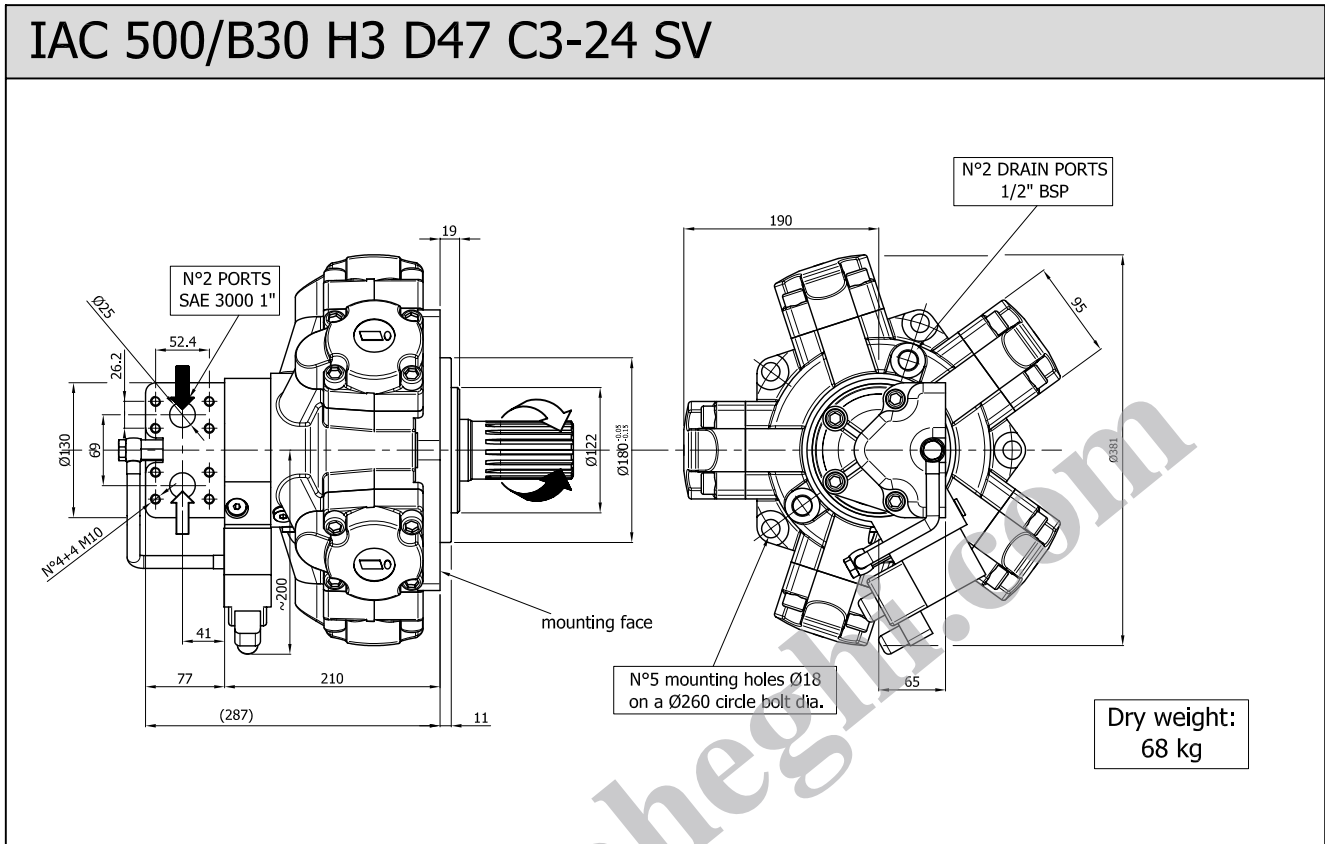
A0: Standard splined shaft



INTERCHANGEABLE WITH HMC30

SIZE

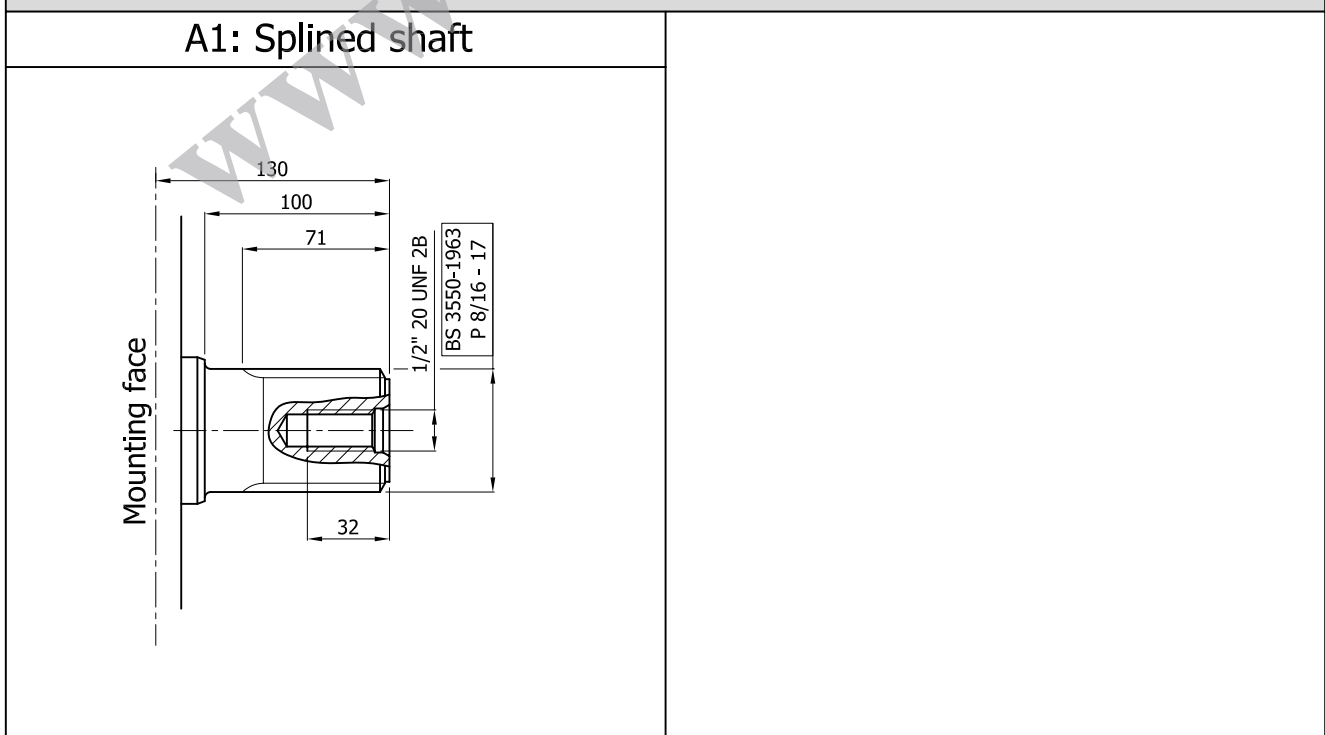
IAC 500/B30 H3 D47 C3-24 SV



SHAFT

IAC 500/B30 H3 D47 C3-24 SV

A1: Splined shaft



ORDERING INSTRUCTIONS

H3

<p>Motor model IAC 500</p> <p>Motor interchangeability /B30</p> <p>Housing H3</p> <p>Shaft A0 standard splined shaft A1 splined shaft</p> <p>Distributor D40 (1" BSP) D47 (SAE 3000 1")</p> <p>Tachometer (optional) TA TB EST EST.30 J TACHOMETER PREDISPOSITION</p> <p>Cetop 3 fitting (optional, available only with D47) C3 (Cetop 3 fitting) C3-12 (Cetop 3 fitting, with 12V DC valve included) C3-24 (Cetop 3 fitting, with 24V DC valve included)</p> <p>Shuttle valve (optional) SV (available only with D47 distributor)</p> <p>Spline billet (optional) SB3 (for A0 splined shaft)</p> <p>Valves (optional) RVDA OVSA (see valve section for details and complete ordination code) OVDA ORVSA RVDAP</p> <p>Special features (optional) 01 (Viton seals) 02 (Oxynit treatment on the external motor surface) 03 (Nitemper treatment on cylinder bores)</p> <p>Displacements MAX-MIN (MAXIMUM AND MINIMUM DISPLACEMENT OF MOTOR)</p>	<p>IAC --</p> <p>/-</p> <p>H1</p> <p>A -</p> <p>D --</p> <p>---</p> <p>---</p> <p>SV</p> <p>SB -</p> <p>---</p> <p>---</p> <p>---</p>	<p>Motor model IAC 500</p> <p>Motor interchangeability /B30</p> <p>Housing H3</p> <p>Shaft A0 standard splined shaft A1 splined shaft</p> <p>Distributor D40 (1" BSP) D47 (SAE 3000 1")</p> <p>Tachometer (optional) TA TB EST EST.30 J TACHOMETER PREDISPOSITION</p> <p>Cetop 3 fitting (optional, available only with D47) C3 (Cetop 3 fitting) C3-12 (Cetop 3 fitting, with 12V DC valve included) C3-24 (Cetop 3 fitting, with 24V DC valve included)</p> <p>Shuttle valve (optional) SV (available only with D47 distributor)</p> <p>Spline billet (optional) SB3 (for A0 splined shaft)</p> <p>Valves (optional) RVDA OVSA (see valve section for details and complete ordination code) OVDA ORVSA RVDAP</p> <p>Special features (optional) 01 (Viton seals) 02 (Oxynit treatment on the external motor surface) 03 (Nitemper treatment on cylinder bores)</p> <p>Displacements MAX-MIN (MAXIMUM AND MINIMUM DISPLACEMENT OF MOTOR)</p>
---	---	---

IAC 500 H3 Max displacement range: 492-255 cc/Rev
Min displacement range: 344-98 cc/Rev

Different displacements on request

EXAMPLE: IAC.500/B30.H3.A1.D47.C3-24.01.492-197
 IAC.500.H3.A0.D40.J.492-147
 IAC.500/B30.H3.A1.D47.C3.393-147